

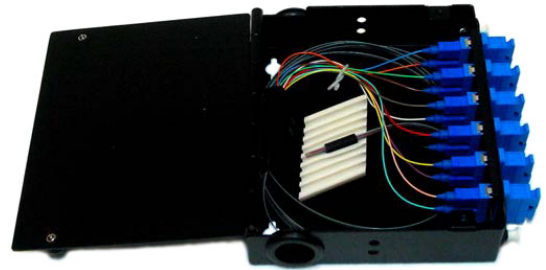
### Mini Wallmount Enclosure

ARIA Mini Wallmount fiber patch & splice enclosures can patch & splice up to 24 fibers LC and 12 fibers SC in Singlemode or Multimode configurations.

These compact sized enclosures can be supplied fully loaded with adapter panels, pigtailed, a splice sleeve holder, and a pre-terminated stub cable or as a plug and play module with an MTP adapter or pigtailed.

100% tested for insertion and return loss.

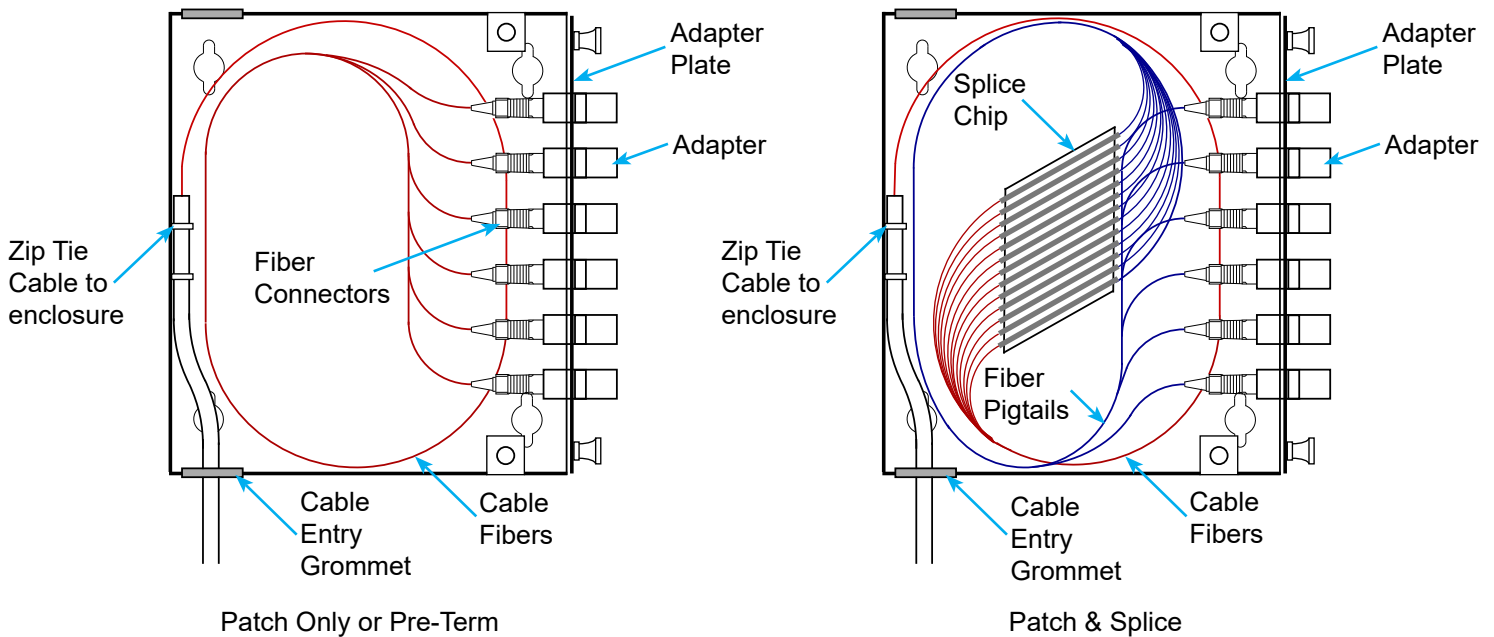
Available in CCH or LGX size formats.



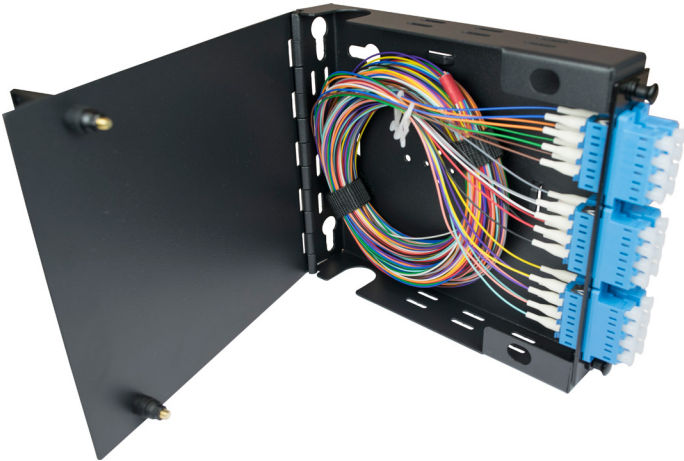
### Features

- Simply loosen the thumbscrews (CCH) or flip the latches (LGX) and open the door to gain access to the internal components
- Enclosures can be pre-terminated for patching only or supplied with a splice chip for patching and splicing capability
- Enclosures are wall mountable and are also rack mountable with optional rackmount brackets

### Component Layout



### Mini Wallmount Enclosure LGX or CCH Format

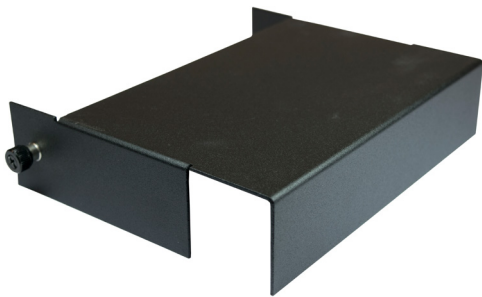


LGX Format: 5.51"x6.25"x1.25" (HxWxD)



CCH Format: 6.25"x5.32"x1.45" (HxWxD)

### Accessories



CCH Mini Wallmount Shroud  
P/N: SHROUD-MWM-BLK



Mini Compression Fitting Supports Cable O.D.: 0.175"-  
0.370" For LGX Mini Wallmount (P/N: CF-XS)



Small Compression Fitting Supports Cable O.D.: 0.200"-  
0.525" For CCH Mini Wallmount (P/N: CF-SM)

### Mini Wallmount Enclosure

#### Part Number



**1** Format  
L = LGX  
C = CCH

**2** Adapter Plate Type  
06 = 6 Port (SC/FC/ST)  
08 = 8 Port (SC/FC/ST)  
12 = 12 Port (SC/LC)  
24 = 24 Port (LC)

**3** Adapter Type  
Singlemode  
SCU = SC/UPC  
SCA = SC/APC  
LCU = LC/UPC  
LCA = LC/APC  
FCU = FC/UPC  
FCA = FC/APC  
STU = ST/UPC  
  
Multimode  
SCM = SC  
LCM = LC  
FCM = FC  
STM = ST

**4** Pigtail  
N = No Pigtail  
9 = 900 μm  
M = 900 μm in Mesh  
R = Ribbon  
T = MTP Adapter (CCH Only)  
  
Note: 3 meter pigtail length is standard

**5** Fiber Type  
Singlemode  
S = SMF-28e+  
B = SMF Bend Insensitive G.657.A1  
  
Multimode  
1 = 62.5/125μm  
2 = 50/125μm  
3 = 50/125μm OM3  
4 = 50/125μm OM4

**6** Stub Cable Type  
Leave Blank for No Stub  
DR = Distribution Style Riser Rated  
DP = Distribution Style Plenum Rated  
AP = Interlocking Armor Plenum Rated  
IR = Indoor/Outdoor Riser Rated  
IP = Indoor/Outdoor Plenum Rated  
OA = Outside Plant Armored  
ON = Outside Plant Non-Armored  
AJ = Non-Armored Alternative Jacket

\*Not available on 24 fiber configurations

**7** Stub Length  
Leave Blank for No Stub  
XXXF = XXX Feet  
XXXM = XXX Meters