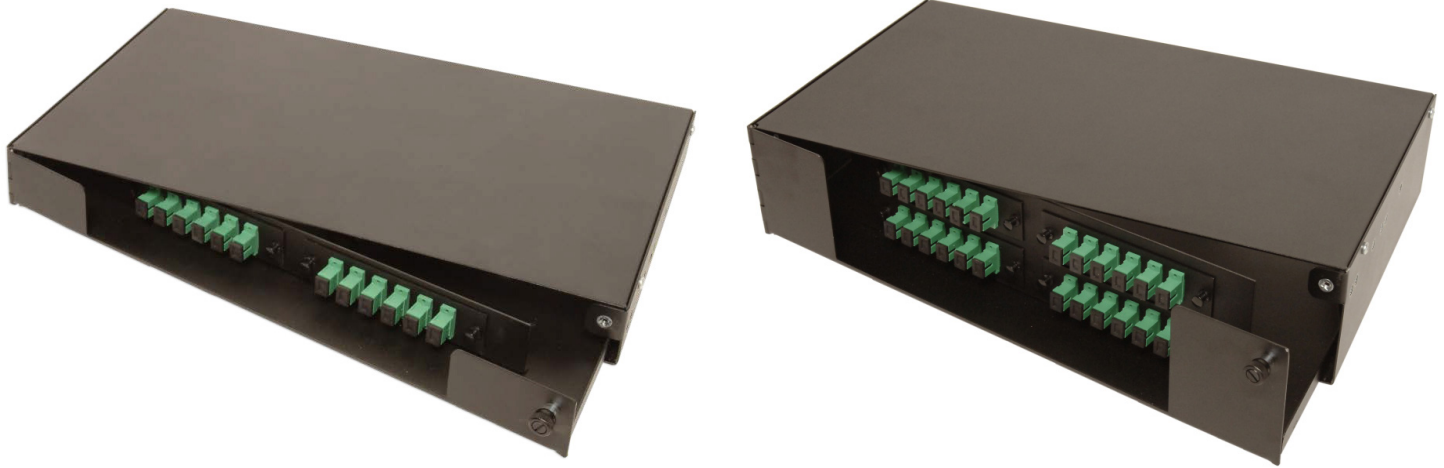


### Swing-Out Series Rackmount Enclosures



ARIA Swing-Out Series Patch & Splice Rackmount Enclosures come in either a 1RU, 2 adapter plate capacity or a 2RU, 4 adapter plate capacity configuration.

The swing-out tray allows easy access to terminations and splicing.

Two universal 19" or 23" mounting brackets are included.

Enclosure can be terminated with adapters, pigtails, or a pre-terminated stub cable.

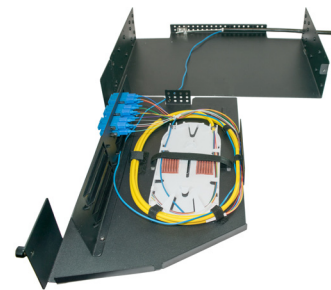
### Specifications

Parameter	Swing Out 2X 1RU	Swing Out 4X 2RU
<b>Dimensions (H"xW"xD")</b>	1.75 x 17.00 x 11.10	3.50 x 17.00 x 11.10
<b>Material</b>	Powdercoated .06" thick aluminum	Powdercoated .06" thick aluminum
<b>Fiber Capacity</b>	24 fibers SC or 48 fibers LC (ribbon only)	48 fibers SC or 96 fibers LC (ribbon only)

### Interior View



1RU with Lid Removed and Tray Open



2RU with Lid Removed and Tray Open

### Swing-Out Series Rackmount Enclosures Accessories



Swing Out Strain Relief Bracket Kit for 1RU (P/N: SWRM-CLMP)



Bottom Entry Strain Relief Bracket for 1RU (P/N: BE-SRB-KIT)



Swing Out Strain Relief Bracket Kit for 2RU (P/N: SRB-2RUSO)

### Part Number



<p><b>1</b> Enclosure</p> <p>2 = 1RU, 2 Adapter Plate Capacity 4 = 2RU, 4 Adapter Plate Capacity</p>	<p><b>2</b> Adapter Plate Type</p> <p>06 = 6 Port (SC/FC/ST) 08 = 8 Port (SC/FC/ST) 12 = 12 Port (SC/LC) 24 = 24 Port (LC) (Ribbon Only)</p>	<p><b>3</b> Adapter Plate Quantity</p> <p>1 = 1 Plate 2 = 2 Plates 3 = 3 Plates 4 = 4 Plates</p>	<p><b>4</b> Adapter Type</p> <p>Singlemode SCU = SC/UPC SCA = SC/APC LCU = LC/UPC LCA = LC/APC FCU = FC/UPC FCA = FC/APC STU = ST/UPC</p> <p>Multimode SCM = SC LCM = LC FCM = FC STM = ST</p>	<p><b>5</b> Pigtail</p> <p>N = No Pigtail M = 900 µm in Mesh R = Ribbon D = Distribution Style (MIC)</p> <p>Note: 3 meter pigtail length is standard</p>	<p><b>6</b> Fiber Type</p> <p>Singlemode S = SMF-28e+ B = SMF Bend Insensitive G.657.A1</p> <p>Multimode 1 = 62.5/125µm 2 = 50/125µm 3 = 50/125µm OM3 4 = 50/125µm OM4</p>	<p><b>7</b> Splice Trays</p> <p>N = None Y = Yes*</p> <p>*1RU &amp; 2RU enclosures come standard with 4.0"x8.2" splice trays in 24 fiber single fiber or 6 position ribbon fiber configurations.</p>	<p><b>8</b> Stub Cable Type</p> <p>Leave Blank for No Stub</p> <p>DR = Distribution Riser Rated DP = Distribution Style Plenum Rated AP = Interlocking Armor Plenum Rated IR = Indoor/Outdoor Riser Rated IP = Indoor/Outdoor Plenum Rated OA = Outside Plant Armored ON = Outside Plant Non-Armored AJ = Non-Armored Alternative Jacket</p>	<p><b>9</b> Stub Length</p> <p>Leave Blank for No Stub</p> <p>XXXF = XXX Feet XXXM = XXX Meters</p>
--	--	--	--	--	--	--	--	---