

Modular Rackmount Panel (MRP)

The Modular Rackmount Panel (MRP) is a 4RU rackmount enclosure that works with CCH or LGX adapter plates and is available in a variety of configurations supporting up to 144 SC or 288 LC fiber terminations.

MRP Rackmount Enclosures can accommodate up to 12 CCH adapter panels and pigtail fanouts.

The available swing-out splice tray rack offers superior access for quick, easy splicing, and the large, open interior space provides excellent access for subsequent installations as networks grow.

Features

- Modular panel supports a variety of configurations that match the user's needs
- Optional swing-out splice tray rack supports highly organized and easy-to-access splicing
- Large interior provides easy access to components
- Clear plexiglass front door and steel rear door
- Doors are secured with easy to use slide latches

Pre-Term or Patch-Only Configuration



The pre-terminated or patch only configuration provides management for cable breakout(s) and a fanout kit organizer.



Specifications

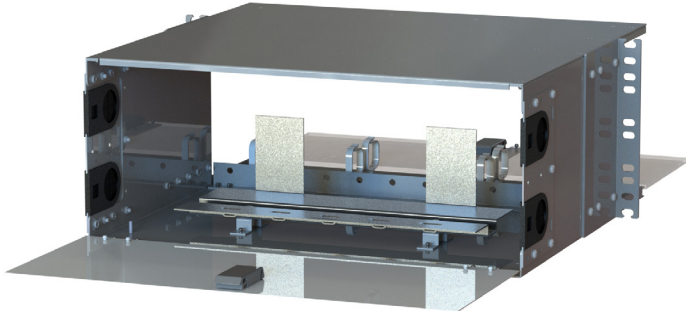
Parameter	Value
Enclosure Material and Finish	0.07" thick gray powdercoated steel
Dimensions (H"xW"xD")	7.0 x 17.0 x 15.5
Mounting	19" or 23" frames (brackets can be reversed to accommodate either)

Swingout Splice Tray Rack Configuration



The optional swing-out splice tray rack maximizes space efficiency and accommodates a wide variety of splice tray sizes.

Modular Rackmount Panel (MRP) Internal Splice Platform Configuration



The optional internal splice platform provides a more traditional splicing solution, with splice trays stacked vertically for maximum accessibility.

Cable Entry and Strain Relief

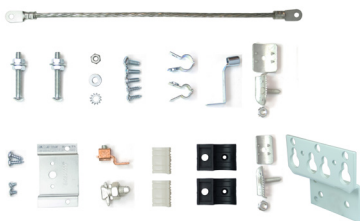


Multiple strain relief bracket mounting locations support top or bottom entry of multiple cables.



Removable cable entry plates support a variety of cable quantities and diameters.

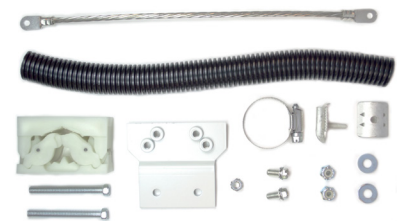
Accessories



12A1 Cable Clamp for Metallic Sheath Cable and for 0.400" to 0.999" Diameter Cable
P/N: 104-384-490-SRE-W



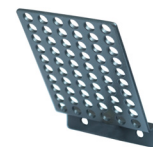
12A2 Cable Clamp for Dielectric Sheath Cable and for 0.400" to 0.999" Diameter Cable
P/N: 106-230-337-SRE-W



12A3 Cable Clamp for 0.25"-1.25" Diameter Cable
P/N: 108-527-423



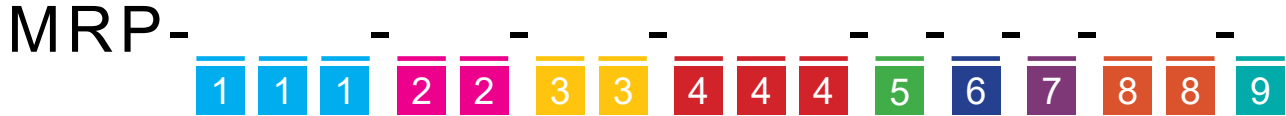
Strain Relief Bracket (P/N: STD-SRB-KIT)



Extended Strain Relief Bracket (P/N: EX-SRB-KIT)

Modular Rackmount Panel (MRP)

Part Number



1 Adapter Plate Format
 CCH = CCH
 LGX = LGX

2 Adapter Plate Type
 06 = 6 Port (SC/FC/ST)
 08 = 8 Port (SC/FC/ST)
 12 = 12 Port (SC/LC/FC/ST)
 24 = 24 Port (LC) (Ribbon Only)

Note: 6 port CCH adapter plates are not available with FC or ST adapters and 8 port CCH type adapter plates are not available.

3 Adapter Plate Quantity
 01 = 1 Plate
 02 = 2 Plates
 03 = 3 Plates
 04 = 4 Plates
 05 = 5 Plates
 06 = 6 Plates
 07 = 7 Plates
 08 = 8 Plates
 09 = 9 Plates
 10 = 10 Plates
 11 = 11 Plates
 12 = 12 Plates

4 Adapter Type
 Singlemode
 SCU = SC/UPC
 LCU = LC/UPC
 FCU = FC/UPC
 STU = ST/UPC
 SCA = SC/APC
 LCA = LC/APC
 FCA = FC/APC

Multimode
 SCM = SC
 LCM = LC
 FCM = FC
 STM = ST

5 Pigtail
 N = No Pigtail
 M = 900 µm in Mesh
 D = Distribution Style (MIC)
 R = Ribbon in Mesh

Note: 3 meter pigtail length is standard

6 Fiber Type
 Singlemode
 S = SMF-28e+
 B = SMF Bend Insensitive G.657.A1

Multimode
 1 = 62.5/125µm OM1
 2 = 50/125µm OM2
 3 = 50/125µm OM3
 4 = 50/125µm OM4

7 Splicing Option
 N = No Splicing
 S = Swingout Splice Tray Rack*
 I = Internal Splice Platform*

*Splice configurations come standard with 5.5"x12.0" splice trays in 24 fiber single fiber fusion or 20 position ribbon fiber mass fusion configurations.

8 Stub Cable Type
 Leave Blank for No Stub

Indoor
 IR = Riser Rated
 IP = Plenum Rated
 IA = Interlocking Armor Plenum Rated

Indoor/Outdoor
 XR = Riser Rated
 XP = Plenum Rated
 XC = Central Tube Riser Rated

Outdoor
 ON = Non-Armored
 OA = Armored Central Tube
 OL = Armored Loose Tube
 AJ = Non-Armored Alternative Jacket
 OR = Ribbon Armored Central Tube
 FD = Flat Drop

9 Stub Length
 Leave blank for No Stub
 Add -PE for a Pulling Eye

XXXF = XXX Feet
 XXXM = XXX Meters