

Lockable SC Adapters

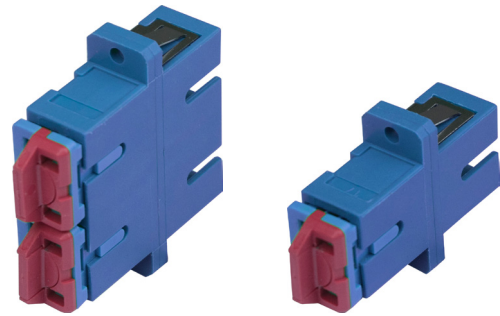
Connectors, Adapters (Bulkheads), Adapter Plates and Pigtail Fanouts

Overview

ARIA's Lockable SC Adapters are designed to prevent unauthorized access to unused fiber ports.

Lockable SC Adapters have locking dust caps that enable empty SC ports to be locked out, preventing the unauthorized insertion of a connector.

Lockable SC Adapters are available in four keyways, signified by different colors. The adapters can only be unlocked with the same color removal tool.

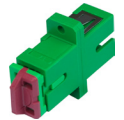


Features

- Lockable keyed security for protecting unused ports
- Multiple key configurations for access control and tamper-proofing
- Industry standard singlemode blue UPC or green APC color coded housing for easy identification
- Available in SC simplex and SC duplex configurations

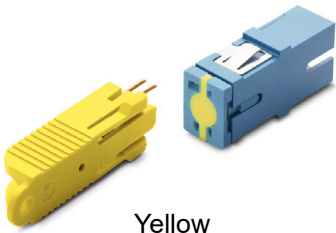
Applications

- FTTX bi-directional networks
- Telecom rooms & ODFs
- Secure military IT networks & test labs
- Commercial enterprise networks
- Datacenters & customer premise connections

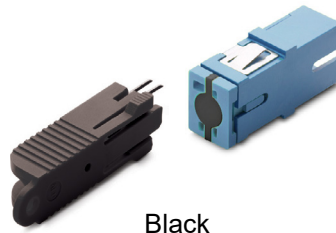


APC
Available

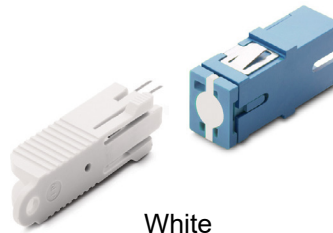
Available Keyways



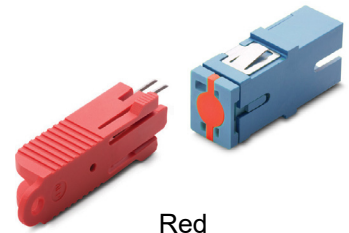
Yellow



Black

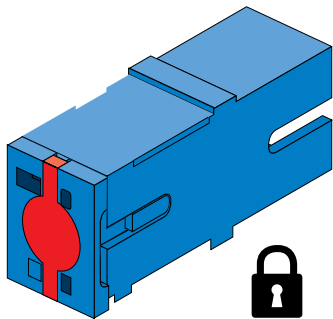


White

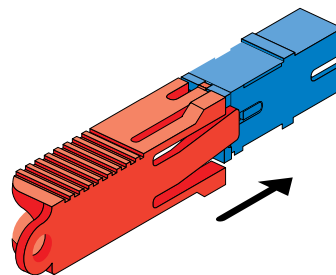


Red

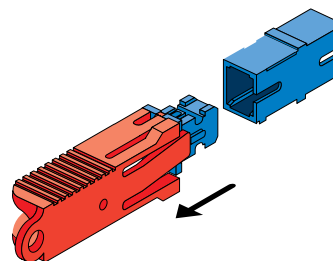
Usage



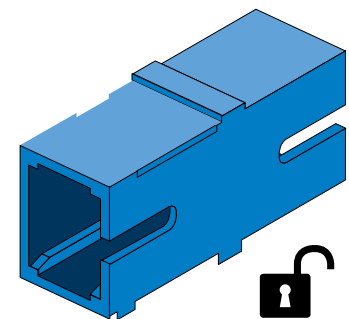
Begin with a secured Lockable SC adapter



Insert the removal tool into the Lockable SC Adapter



Remove the tool from the Lockable SC Adapter



End with a Lockable SC Adapter ready for patching