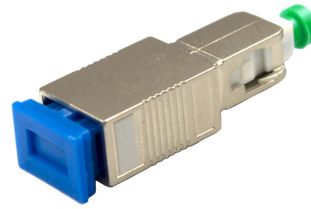


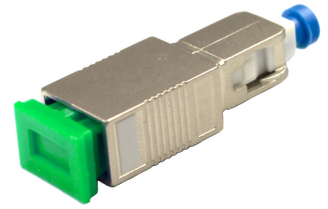
Between Series Adapters

ARIA Between Series Adapters are used to quickly change an SC/UPC connector into an SC/APC connector or vice versa. These adapters enable the use of current patchcord stock where a transition to UPC or APC is needed to complete the circuit.

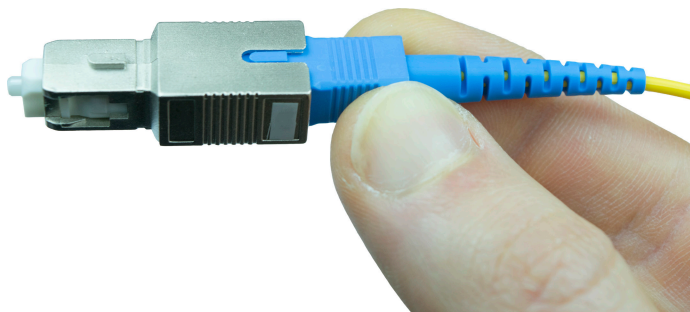
ARIA Between Series Adapters are Telcordia GR-326-CORE compliant. Return loss is typically 55dB for UPC and 60dB for APC.



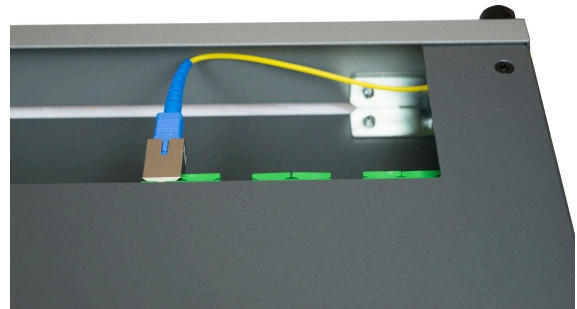
UPC Female to APC Male



APC Female to UPC Male



Easy to install on any patchcord or pigtail



Short size ensures proper cable bend radius in patch panels

Testing

- Water Immersion - 7 days in 43°C, 5.5 pH water
- Vibration - 10-55 Hz freq, 1.52 mm amp for 2 hours
- Flex Test - 100 cycles with a 0.5 lb or 2 lb load
- Twist Test - 10 cycles with a 1.1 lb, 1.65 lb, or 3 lb load

- Side Pull - 0.55 lb or 2.75 lb load at a 90 degree angle
- Cable Retention - 1 lb, 1.54 lb, or 4.4 lb load for 1 min
- Durability - 200 mating cycles with 3 ft, 4.5 ft, or 6 ft length
- Impact Test - 8 cycles with a 6 ft drop on 3 different axes

Features

- Low attenuation value
- Environmentally stable and reliable
- Excellent return loss
- Bidirectional
- No air gap

Applications

- Telecommunications
- CATV
- Fiber-to-the-home Fiber-to-the-MDU
- Fiber-to-the-Business
- Test Equipment

Specifications

- Attenuation: 0.2dB typical
- Operating Temperature: -40 to 75 °C
- Storage Temperature: -50 to 85 °C
- Return Loss UPC: >55dB
- Return Loss APC: >60dB

Part Number

BOS- 1 1 1 2 2 2

1 Female Connector Type

Singlemode
SCU = SC/UPC
SCA = SC/APC

2 Male Connector Type

Singlemode
SCU = SC/UPC
SCA = SC/APC