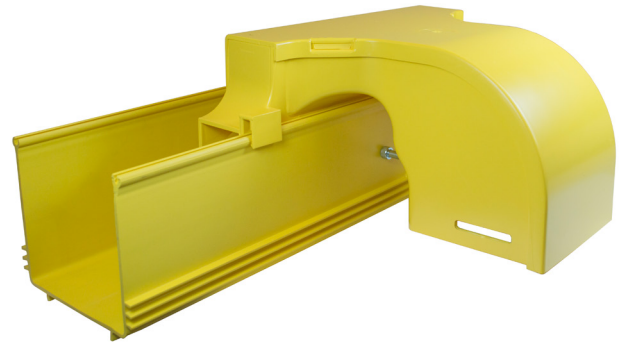


Cable Management Raceways for Rackmount Systems

ARIA Technologies offers a complete line of overhead or underfloor cable management raceways for data centers.

The ARIA Lightpaths System is the fastest to assemble raceway product on the market. Parts slide together and can be assembled in seconds.

All popular drops and mounting methods are available. Lightpaths is the only system available in 4"x8" size which accommodates 960 fiber cables. Other sizes are 2"x2", 2"x4", 4"x4", and 4"x12" (HxW).

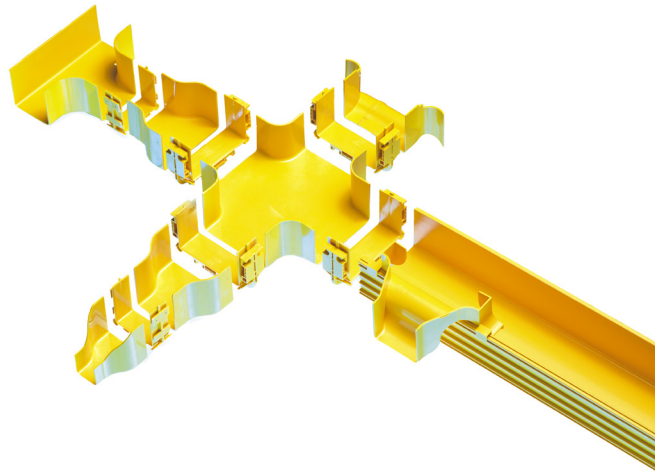


Overview

Available in six sizes and solid wall or slotted wall configurations. With the largest range of connecting components and mounting hardware available, the ARIA Lightpaths System provides a solution for any fiber routing application.

ARIA Lightpath components simply snap together or they can be connected with "slotless joiners". Vertical drops can be positioned or added easily by adding a cutout in the horizontal duct raceway with a simple to operate hand tool.

The unique design of the ARIA Lightpath system protects fiber from damage and ensures that the bend radius of the cable is not compromised.



Standards

- ISO 9001 Certified Quality Management System by NCS International
- Fire retardant plastic, Halogen Free, UL94-VO rated
- UL2024A standard
- EEU - ROHS requirements



See the ARIA Lightpaths Raceway for Cable Management Section Starting on Page 75 for More Information